

DO NOT SCALE. WORK TO FIGURED DIMENSIONS ONLY.  
 ALL EXISTING DIMENSIONS TO BE CHECKED ON SITE.  
 DRAWN ON AUTOCAD R2004 AT DEADY GAHAN ARCHITECTS LTD  
 LAYERS ON THIS DRAWING COMPLY WITH BS 1192: PART 5

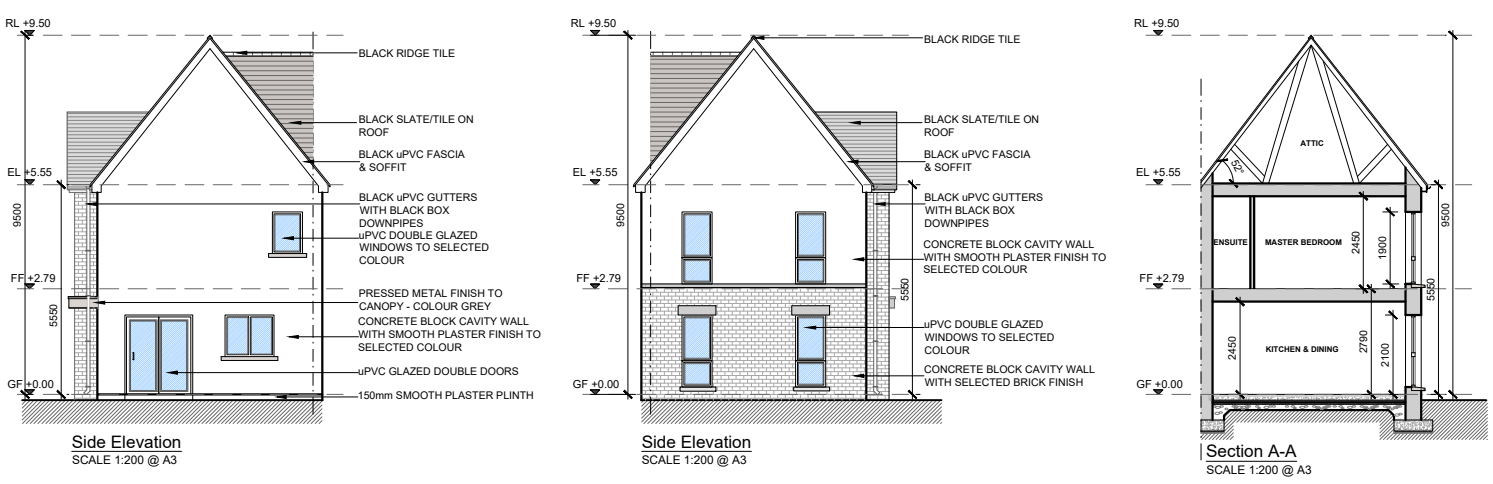
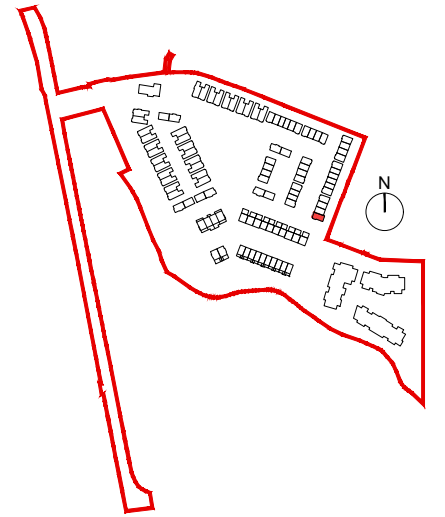
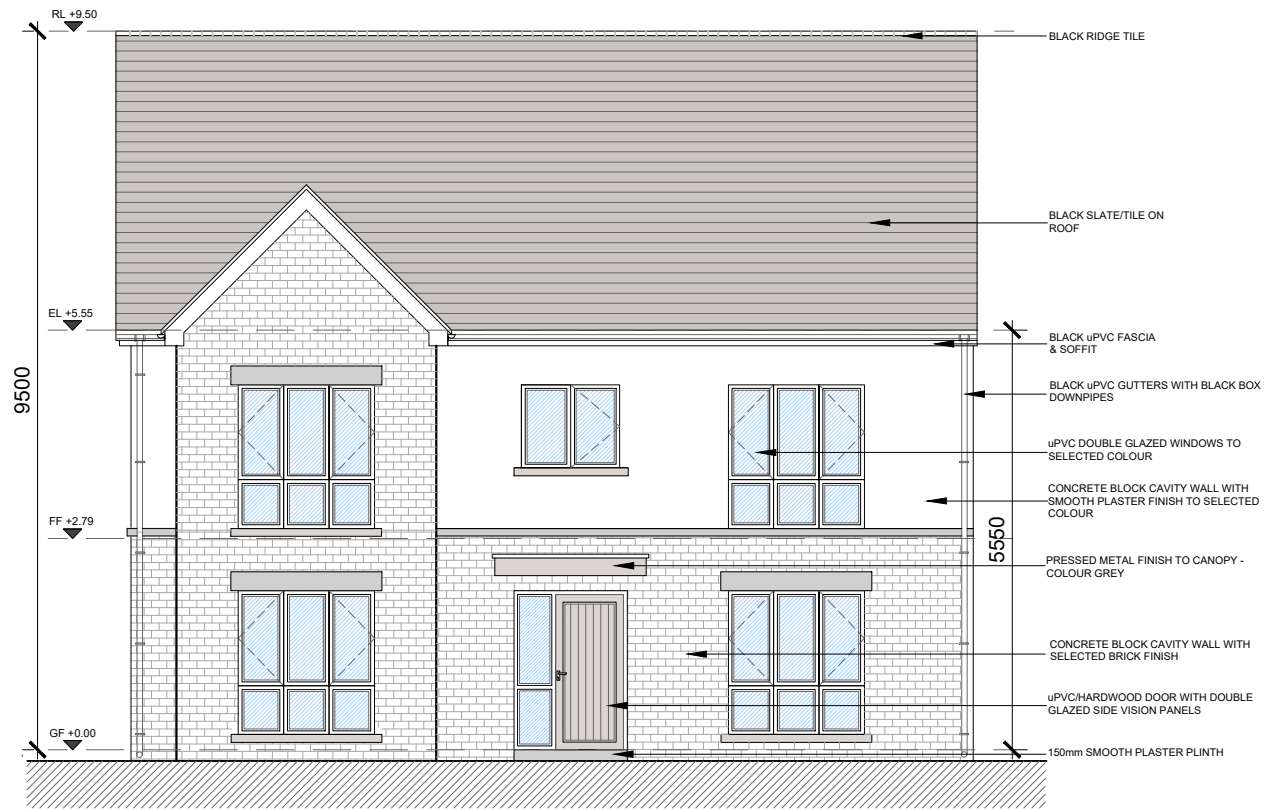
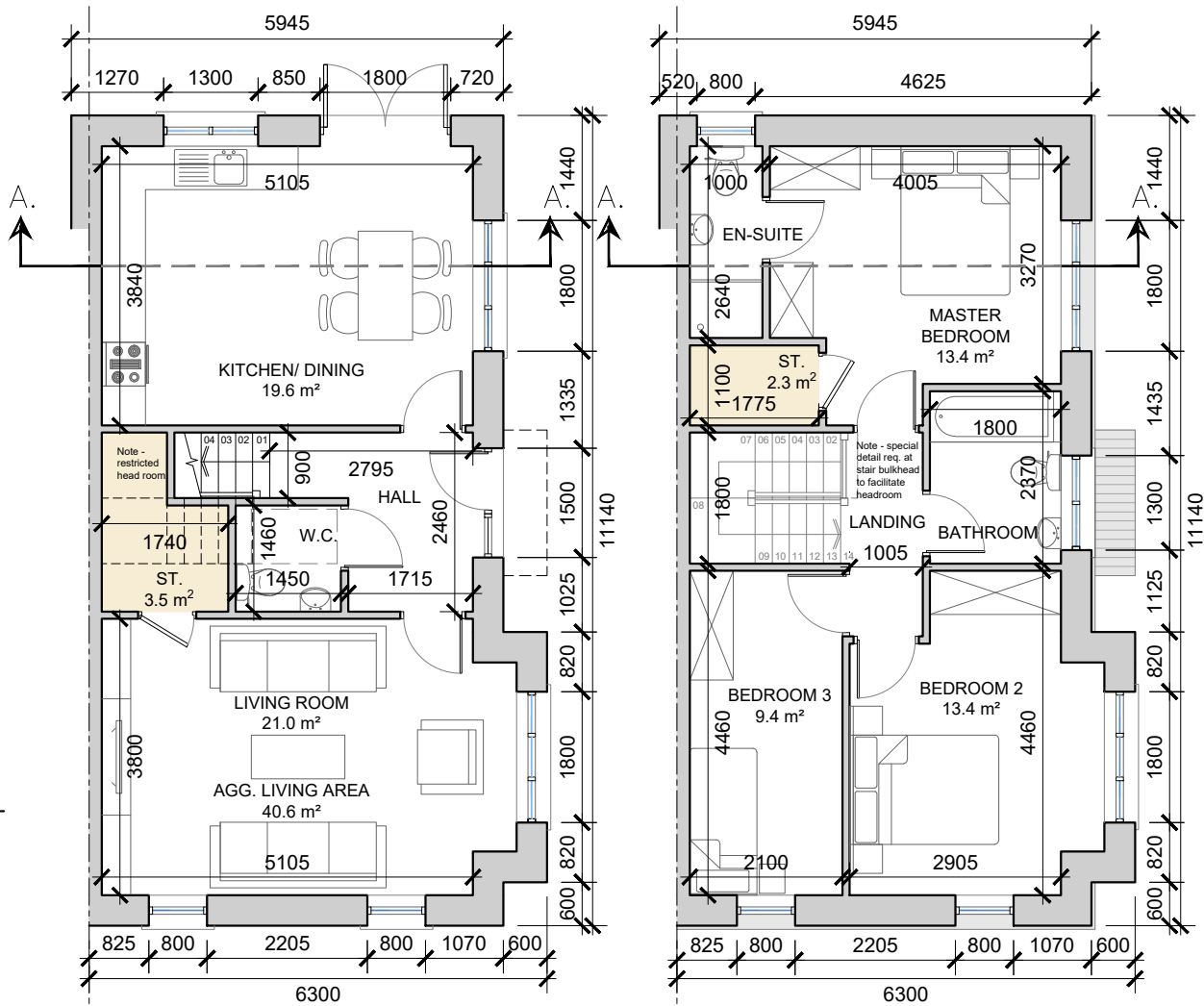
**HOUSE TYPE C1**

3-bed Townhouse (5 person)

**AREA: 108.2 SQ.M.**

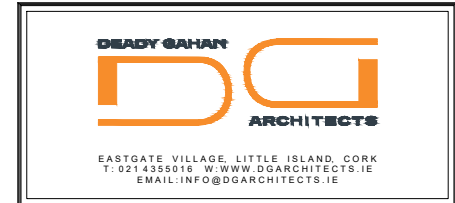
**1,165 SQ.FT.**

STORAGE total - 5.8 sq.m.



**House Type C1 - Character Area 1**  
 See site plan (dwg no. 23049/P/003) for material locations

date	rev	name	chk	note
07.05.24	P1	MP	EJG	ISSUE FOR PLANNING



Project  
 PROPOSED RESIDENTIAL DEVELOPMENT  
 AT PORT ROAD, KILLARNEY, CO. KERRY.

Drawing title  
 HOUSE TYPE C1 - 3-BED TOWNHOUSE  
 PLANS, ELEVATIONS & SECTION A-A

Scale	Drawn	Checked	Date
1:100/200 @ A3	MP	EJG	07.05.24
Project No.	Dwg. No.	Revision	
23049	23049/P/300	P1	

Information / Comments	Tender
<input type="checkbox"/> Planning <input type="checkbox"/> Construction	<input type="checkbox"/>